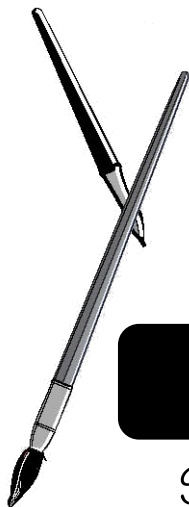


# Sew Creative & Colorful! Lots of New & Exciting Exhibitors!



## Spokane Quilt, Craft & Sewing Festival

Seminar & Workshop Program

**APRIL 2 - 4, 2026**

Spokane Fair & Expo / Expo Building  
404 North Havana Street, Spokane, Washington 99202



FESTIVAL HOURS: Thursday & Friday 10:00 am - 5:00 pm / Saturday 10:00 am - 4:00 pm

For more information, visit us online at: [quiltcraftsew.com](http://quiltcraftsew.com)

### PLATINUM SPONSORS



#### WELCOME:

The Rusty Barn Promotion Group, Inc. welcomes you to the Quilt, Craft & Sewing Festival at Spokane Fair & Expo, Expo Building in Spokane, Washington.

At our show you will find a wide variety of Sewing, Quilting, Needle-art and Craft supply exhibits from many quality local and national companies. In addition, you will have the opportunity to participate in one or more of the many "Make and Take" Workshops or FREE educational Seminars.

Your ticket is good all three days of the show — so please take your time and don't miss any of the exciting new products, techniques or educational ideas.

Rusty Barn Promotion Group, Inc.  
Chris Butler and Eric Spillet  
2022 South 2100 East, Suite 201  
Salt Lake City, Utah 84108  
Email: [rustybarn1@aol.com](mailto:rustybarn1@aol.com)

#### SHOW RULES:

The following rules are established for everyone's comfort and safety. We hope these guidelines will help make this event as enjoyable as possible.

**PLEASE DO NOT TOUCH** - Please do not touch the displays. If you would like help with a display, please ask the exhibitor for assistance.

**CHILDREN** - Children must be supervised at all times by an adult. We do not recommend small children participate in the workshops.

**FOOD-DRINKS-SMOKING** - There will be no food or drinks permitted on the show floor, except in the concession areas. Smoking is not permitted anywhere in the building.

**VIDEOS-PHOTOGRAPHS-SKETCHING** - Photography, video taping, or sketching of the exhibitors' booths or merchandise is not permitted.

FREE  
COPY

# 2026 Spokane Quilt, Craft & Sewing Festival Seminar Schedule

ROOM # / TIME	11:00 AM	12:00 NOON	1:00 PM	2:00 PM
CLASS 1	CHRISTINA DOUGHTY COUNTED CROSS STITCH CLASS	KAREN BARRY TURTLES, TURTLES, TURTLES	STACY SURINA COME "CUDDLE" WITH ME	CHRISTINA DOUGHTY ARE YOUR SCRAPS OUT OF CONTROL? STRAIGHT OUT OF LINE RULER CAN HELP!
CLASS 2	CONNIE SPURLOCK EVERYBODY LOVES A SHORTCUT!	PATTI SHERWIN NO MORE WONKY QUILTS	NO SEMINAR SCHEDULED	CONNIE SPURLOCK ONE OF A KIND JACKET

**Both Seminars Rooms are located on the North West side of the Hall.  
Please see your free Show Program for additional details.**

## FREE SEMINARS

### ARE YOUR SCRAPS OUT OF CONTROL? STRAIGHT OUT OF LINE RULER CAN HELP!

*Christina Doughty (booth #207)*

With straight out of line ruler you will look differently at your scraps and bring the excitement back to quilting. If you're looking for a fun fast project. We can help you with that. This ruler is great for masculine quilts, quilts of valor, great gifts for anyone. The blocks you can make with this ruler would make lovely borders as well.

**Classroom #1, 2:00 pm**

### COME "CUDDLE" WITH ME

*Stacy Surina (booth #205)*

Join Stacy for this fun and informative quilting class on using cuddle fabric.

**Classroom #1, 1:00 pm**

### COUNTED CROSS STITCH CLASS

*Christina Doughty (booth #207)*

Want to learn counted cross stitch but don't know where to start? Join Christina and she will give you tips and tricks to get started.

**Classroom #1, 11:00 am**

### EVERYBODY LOVES A SHORTCUT!

*Connie Spurlock (booth #121)*

Ever wish there was an easier / better / faster way to get through some of your sewing projects? There is!! Would you like to turn 2 pieces of fabric rights sides out and have the opening be a perfectly straight edge? Want to learn the easiest way to bind a quilt with no measuring and no tools? Even a beginner can do it! Easily gather 100" ruffle in a minute? Come and learn some pattern designer tips that will quicken and improve your project results.

**Classroom #2, 11:00 am**

### NO MORE WONKY QUILTS

*Patti Sherwin (booth #821)*

Are you just learning and / or want to improve your skills? Join Patti, owner of Patti Cakes Quilt Shop and quiltin' for 20 years for tips and tricks for faster cutting, squaring up and finishing those UFO's.

**Classroom # 2, 12:00 Noon**

### ONE OF A KIND JACKET

*Connie Spurlock (booth #121)*

Make your own one-of-a-kind jacket creation using a sweatshirt. Use whole cloth, unfinished projects, batik wedges, scraps, yarns, braids and iron-on crystals to make a stunning decorator jacket. We will show you all of the "do's" and especially the "don'ts" to inspire you to make a few fabulous gifts for others or for yourself.

**Classroom #2, 2:00 pm**

### TURTLES, TURTLES, TURTLES!

*Karen Barry (booth #712)*

Quilt Passions always features lots of turtle designs as the green sea turtle is a symbol of protection in Hawaiian culture. In this workshop we'll demo three of our most popular turtle applique patterns (including a stunning no-sew project) as well as a beautiful sashiko design. Something for all skill levels and a free gift for all attendees!

**Classroom #1, 12:00 noon**

# MAKE & TAKE WORKSHOPS

## ASSORTED FLAVORS TEA TOWEL

*Sew Wonderful Dreams*

Come make a tea towel with the most adorable chick. Choose between designer fabrics and pair it with the tea towel of your choice. Learn applique and make someone special a gift at the same time.

**Booth #121, \$5.00**

## BEAUTIFUL TOTE BAG

*Uniquely Crafts*

Come have fun with us, design and make a unique and beautiful tote bag using iron-on crystal transfers.

**Booth #831, \$8.00**

## MAKE N TAKE ORNAMENT

*Your Best Friends Quilt Shop*

Get a head start on decorating the tree with

our make n take ornament! You get to be the boss of your ornament fill it with your likes.

**Booth #210, \$5.00**

## WOODEN KEYCHAIN QUILT BLOCK FOB

*Pieces of Love Quilt Shop*

Come and make a Wooden Keychain Quilt Block fob with the fabric of your choice in the middle.

**Booth #616, \$6.00**



NOTES \_\_\_\_\_

\_\_\_\_\_

\_\_\_\_\_

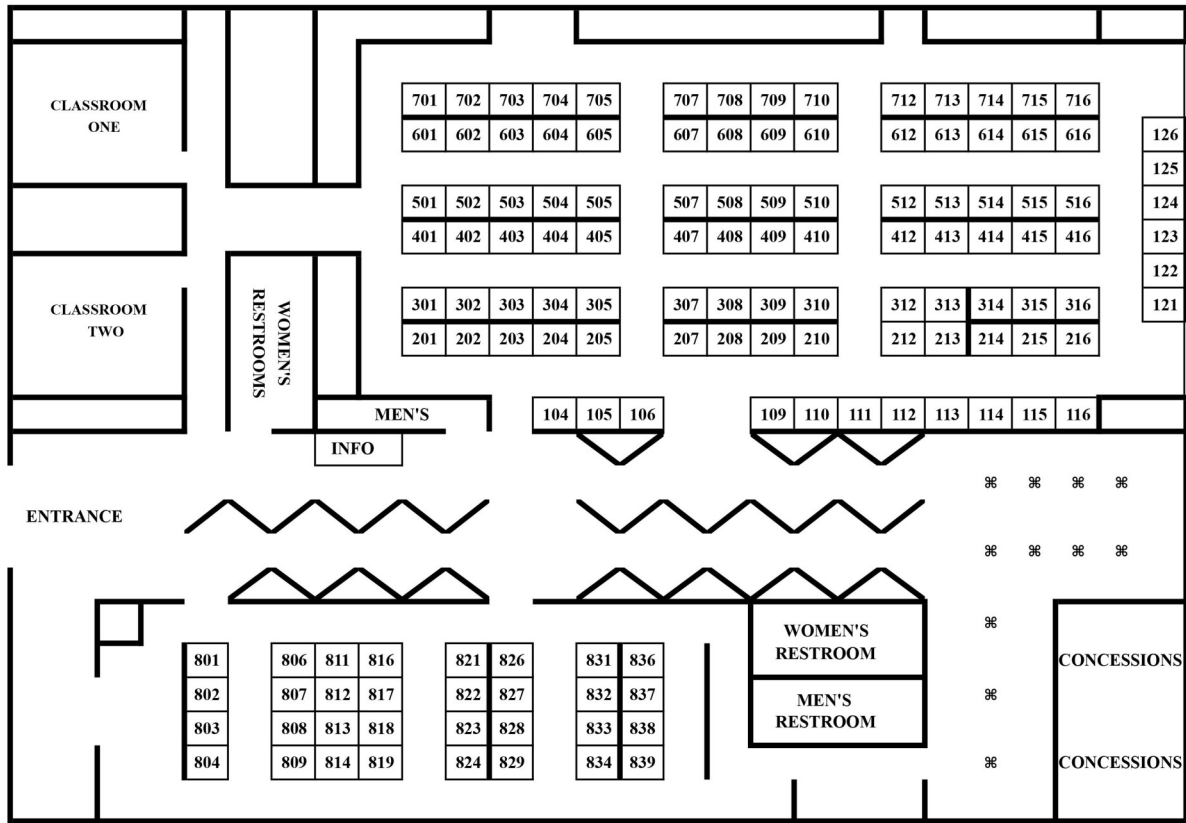
\_\_\_\_\_

\_\_\_\_\_

\_\_\_\_\_

\_\_\_\_\_

**Spokane Quilt, Craft & Sewing Festival**  
 Spokane County Fair & Expo Center  
 April 2-4, 2026



**SPOKANE LIST OF VENDORS (2026) WITH BOOTH #'s**

A CHARMING AFFAIR	707-709	PATTI CAKES QUILT SHOP	821-824
A+ QUILT & SEW CO	704-705	PIECES OF LOVE	613-616
BECKY'S SEWING CENTER	501-502	PURSE MAKING SUPPLY	407-410
BIG MAT ROTARTY CUTTING SURFACE	314-316	QUALITY SEWING	212-213 & 312-313
BOERSMA'S SEWING CENTER	401-403	QUILT PASSIONS	712-714
CARRIAGE COUNTRY QUILTS	109-114	QUILTED CORNERS	801-804
COPPER MOUNTAIN QUILTING	307-310	QUILTED POSIES	404-405
CUSTOM CREATIONS	201-205	SEW RENEWABLE	214-216
ECLIPSE QUILTING	715-716	SEW VERY SMOOTH	507-508
FABRIC CHICKS	412-416	SEW WONDERFUL DREAMS	121-123
GOOD VIBES QUILT SHOP	115-116	STARLIT QUILTS	601-603
HAND IN HAND FABRICS	710	STITCHIN BY THE RIVER	104-106
ISLAND QUILTER	124-126	THE QUILTING BEE	806-809
JUST SEW VINTAGE	509-510	THE QUILTING BEE	811-814
KNOTTY STITCHES	701-703	THE QUILTING BEE	816-819
LAKESIDE SCISSORS	512-514	THE STITCHERY ON REGAL	612
LALA & MER	826-829	UNIQUELY CRAFTS	831-834
LEGIT KITS	607	VIKING SEWING CENTER	604-605
MARTELLI ENTERPRISES	503-505	WASHINGTON STATE QUILTERS	WALL BOOTH
MIDWAY WOOL	301-305	WORKMAN FARMS	836-839
MONARCH ILLUMINATION & OLISO	515-516	YOUR BEST FRIENDS QUILT SHOP	207-210
MY MESSAGE PILLOW	609-610		

Introducing the  
Infinity 28™.  
**Let's quilt.**

# Handi Quilter

Come visit our booth for a test drive.



# Sew in Love

WITH THE PERFECT PAIR



**brother**  
at your side

1-800-4-A-BROTHER

[f](#) [t](#) [v](#) [i](#) [p](#) /brothersews

©2020 Brother International Corporation. ©Disney.

# Quilting Precision is now for Everyone

Introducing the first stitch regulator from Janome - our new A.S.R.™ (Accurate Stitch Regulator) system.

Achieve Hi-Definition Quilting results on any color or texture fabric. This exclusive stitch regulation system kit comes standard with our Continental M17 and the Continental M8 Professional models, and is an optional accessory for the Horizon Memory Craft 9480QCP.

**Now Available for 3 models!**



**A.S.R.™**  
Accurate Stitch Regulator System



**CONTINENTAL M8**  
PROFESSIONAL



**CONTINENTAL M17**

**HORIZON MEMORY CRAFT**  
9480QCP PROFESSIONAL



[www.janome.com](http://www.janome.com)

[f](#) [p](#) [i](#) [v](#) [t](#) © 2024 Janome

[www.janome.com/accessories/sewing-machine-feet/a.s.r.-accurate-stitch-regulator-kit/](http://www.janome.com/accessories/sewing-machine-feet/a.s.r.-accurate-stitch-regulator-kit/)

# JANOME